



22 Oakley Road, Corby, NN17 1NA



# £199,950

Stuart Charles are delighted to offer for sale with NO CHAIN this fully renovated three bedroom Victorian townhouse located in Corbys Old village. Recently renovated by the current owners this property would be an ideal purchase for first time buyers or an investor looking for something close to the train station. The accommodation on offers comprises of an entrance hall, open plan lounge/diner, and kitchen. To the first floor you will find two bedrooms and the family bathroom. The top floor has the second bedroom. Outside the front has a laid lawn with rear gated access. The rear a garden has a patio area that leads to a large laid lawn. Call now to book a viewing!!

- NO CHAIN
- WALKING DISTANCE TO THE TOWN CENTRE
- THREE GOOD SIZE BEDROOMS
- LARGE REAR GARDEN
- MODERN COMBI BOILER
- READY TO MOVE INTO
- TRAIN STATION CLOSE BY
- OPEN PLAN LIVING SPACE
- FULLY REWIRED

## Entrance Hall

Entered via a double glazed door, radiator, stairs rising to first floor, doors to:

## Open Plan Area

23'3 x 14'10 (7.09m x 4.52m)

Double glazed window to front and rear elevation, under stairs storage, radiator, door to:

## Kitchen

8'9 x 8'4 (2.67m x 2.54m)

Featuring a range of base level units with a single sink and drainer, electric oven and hob with extractor hood, space free standing fridge freezer, radiator, spotlights, double glazed window to rear, door to rear.

## Landing

Doors to:













### **Bedroom One**

15'0 max x 10'4 (4.57m max x 3.15m)

Double glazed window to rear, built in wardrobe, radiator door to:

### **Bedroom Three**

9'2 x 8'5 (2.79m x 2.57m)

Double glazed window to rear, radiator door to:

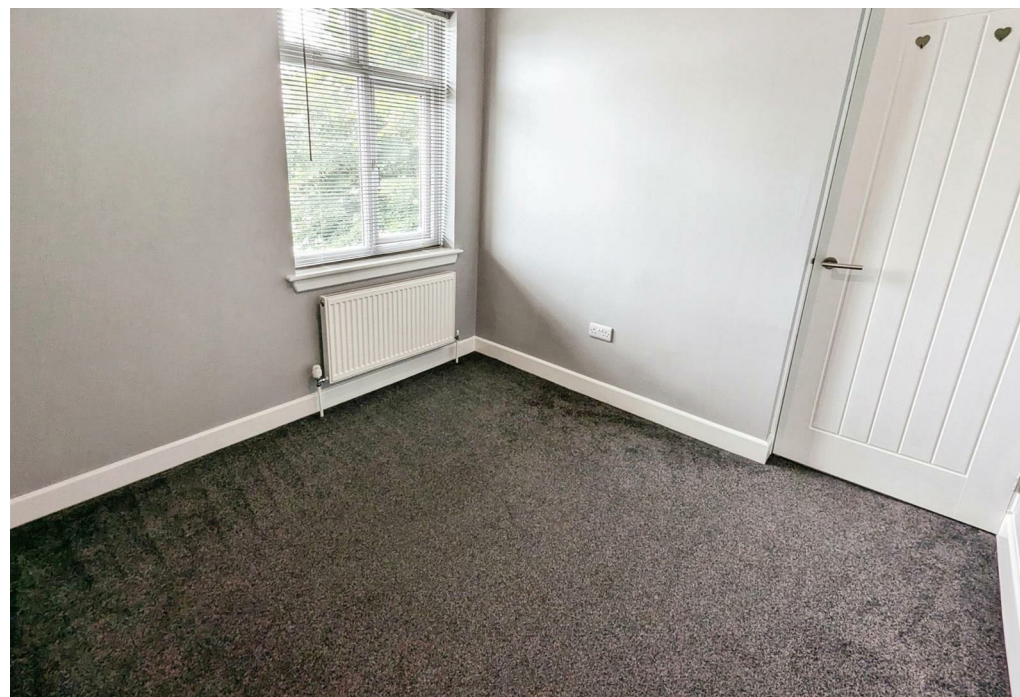
### **Bathroom**

### **Bedroom Two**

14'5 max x 13'5 max (4.39m max x 4.09m max)

Double glazed window to side elevation double glazed skylight to front elevation, radiator door to:

### **Outside**









Outside the front has a laid lawn with rear gated access.

The rear a garden has a patio area that leads to a large laid lawn

















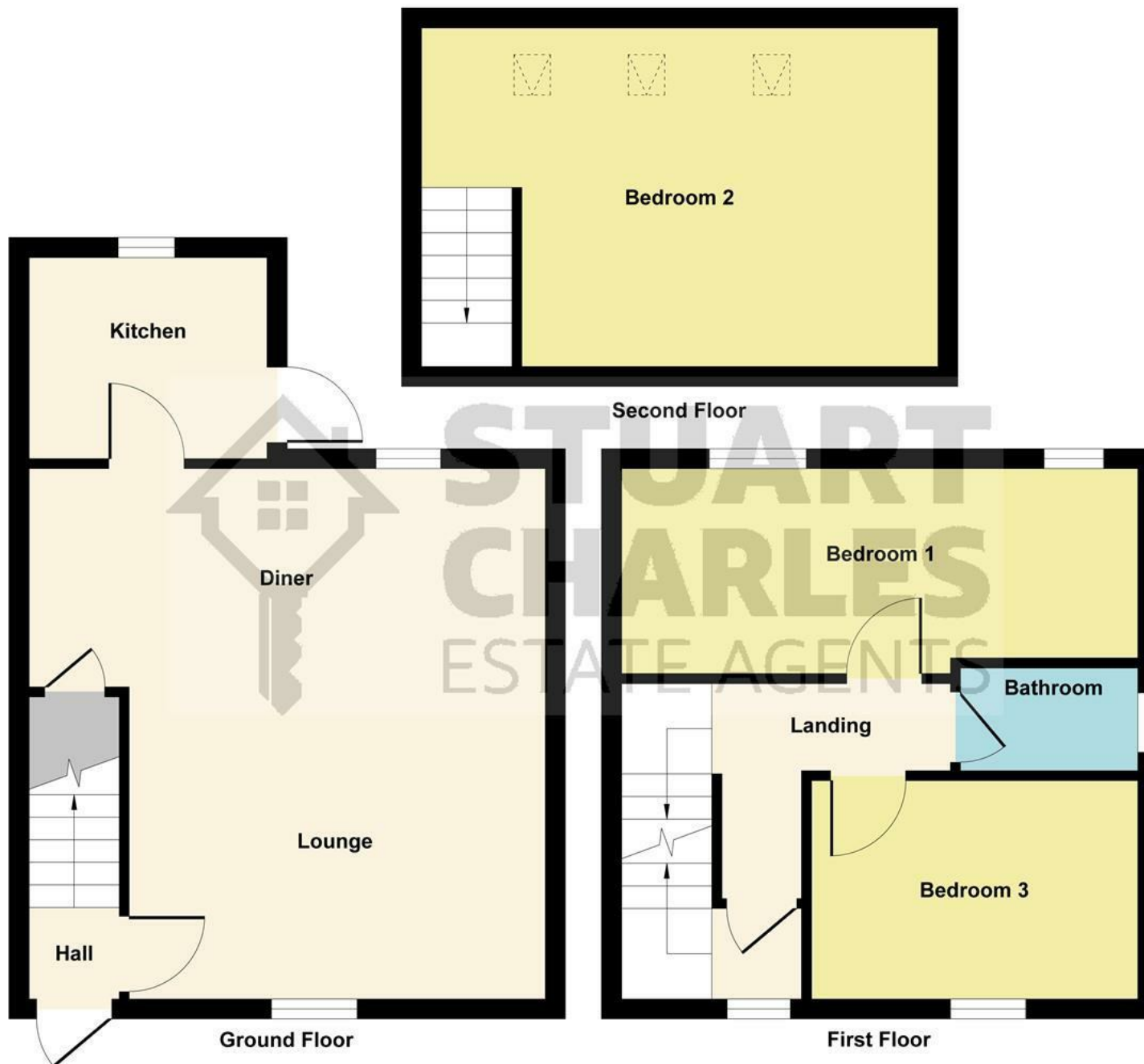


Illustration for identification purposes only, measurements are approximate, not to scale.  
Produced by Elements Property



